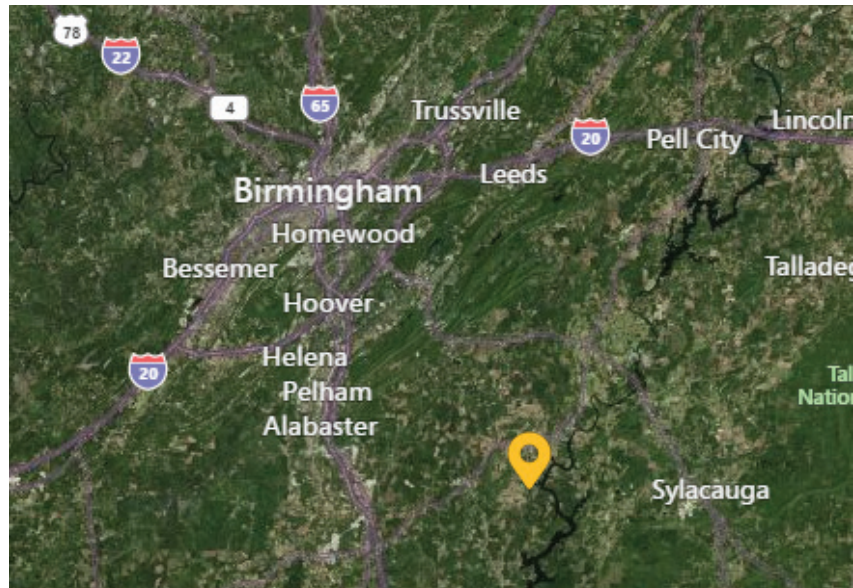
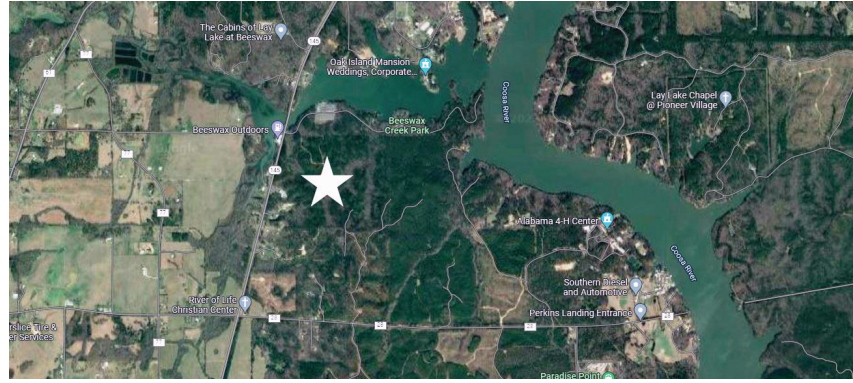


Longleaf Realty PARTNERS, LLC

COLUMBIANA LAND

19 ACRES FOR SALE IN SHELBY COUNTY



PROPERTY DESCRIPTION

Located off Highway 145, near Wilsonville and Columbiana, the 19-acre property is situated close to the Coosa River and the Beeswax Boat Ramp. The property houses beautiful, mature hardwoods and would make a great recreational tract. The tract consists of 827,640 square feet of mixed pine and hardwood timber. The property's hardwood bottom and gentling rolling topography offers breathtaking scenery.

Contact Claude Tindle or Champ Stewart for more information.

PROPERTY
19 Acres

COUNTY
Shelby

AVAILABLE
827,640+ SF

PRICING
\$150,000

ZONING
N/A

The information contained herein has been obtained from sources deemed reliable, however, LRP makes no guarantees, warranties or representation as to its completeness or accuracy thereof.

Claude Tindle
ctindle@longleafrealestate.com | 205.222.5263

Champ Stewart
cstewart@longleafrealestate.com | 205.910.9084

For More Information: Longleafrealestate.com

PHYSICAL 1135 14th Ave S, Birmingham AL 35205 | p 205.879.3733
MAILING PO Box 59245, Birmingham AL 35259