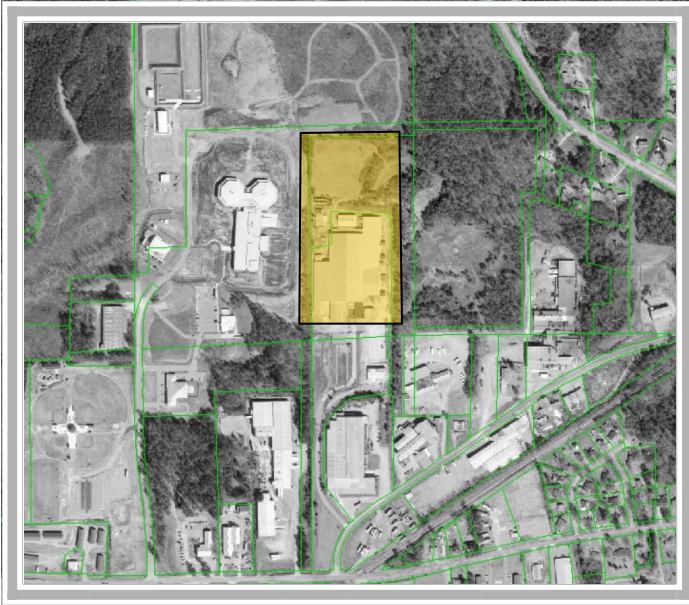


Industrial Building for Sale



FOR SALE

104 Industrial Park Drive
Columbiana, Alabama

\$1,350,000 or \$6.36 / SF

Building Size
212,280 SF

No. of Buildings
Two

Land Size
15 Acres

Year Built—1969
Renovated—1999

Zoning—Industrial

Construction—Metal Siding

No. of Floors
One

Convenient to I-65

Contact:

Claude Tindle, SIOR, CRE
513 19th Street South
Irondale, Alabama 35210
205.879.3733 / T
205.879.3720 / F
ctindle@longleafrealestate.com
www.longleafrealestate.com

Information herein is from sources deemed reliable, but no warranty or representation is made to the accuracy thereof.

Longleaf Realty
PARTNERS, LLC

“Creating Value in Commercial Real Estate”