



**RETAIL/MEDICAL BUILDING
FOR LEASE IN MIDTOWN**

2205 3rd Avenue South, Birmingham, AL 35233

Property: Retail/Medical

Land Size: .64 Acres

County: Jefferson

Building Size: 7,125 SF

Price: ~~\$32 PSE~~ \$23.50 PSF

Zoning: M1

Year Built: 1920

Year Renovated: 2011

Features:

- Ideal location near UAB's campus, University Hospital, 20 Midtown Children's Hospital, Region's Field & Railroad Park.
- Upstairs office space
- 40 parking spaces
- Large hood vent & grease trap, and three phase power available.



FOR MORE INFORMATION

CONTACT

Claude Tindle

☎ o 205.879.3733 | c 205.222.5263

✉ ctindle@longleafrealestate.com

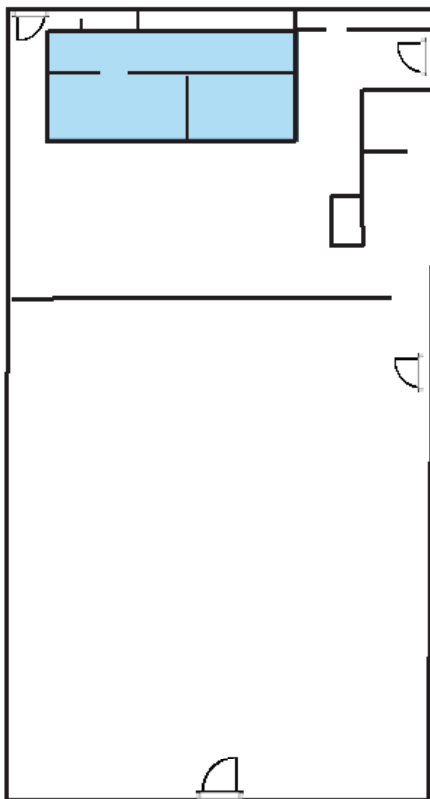
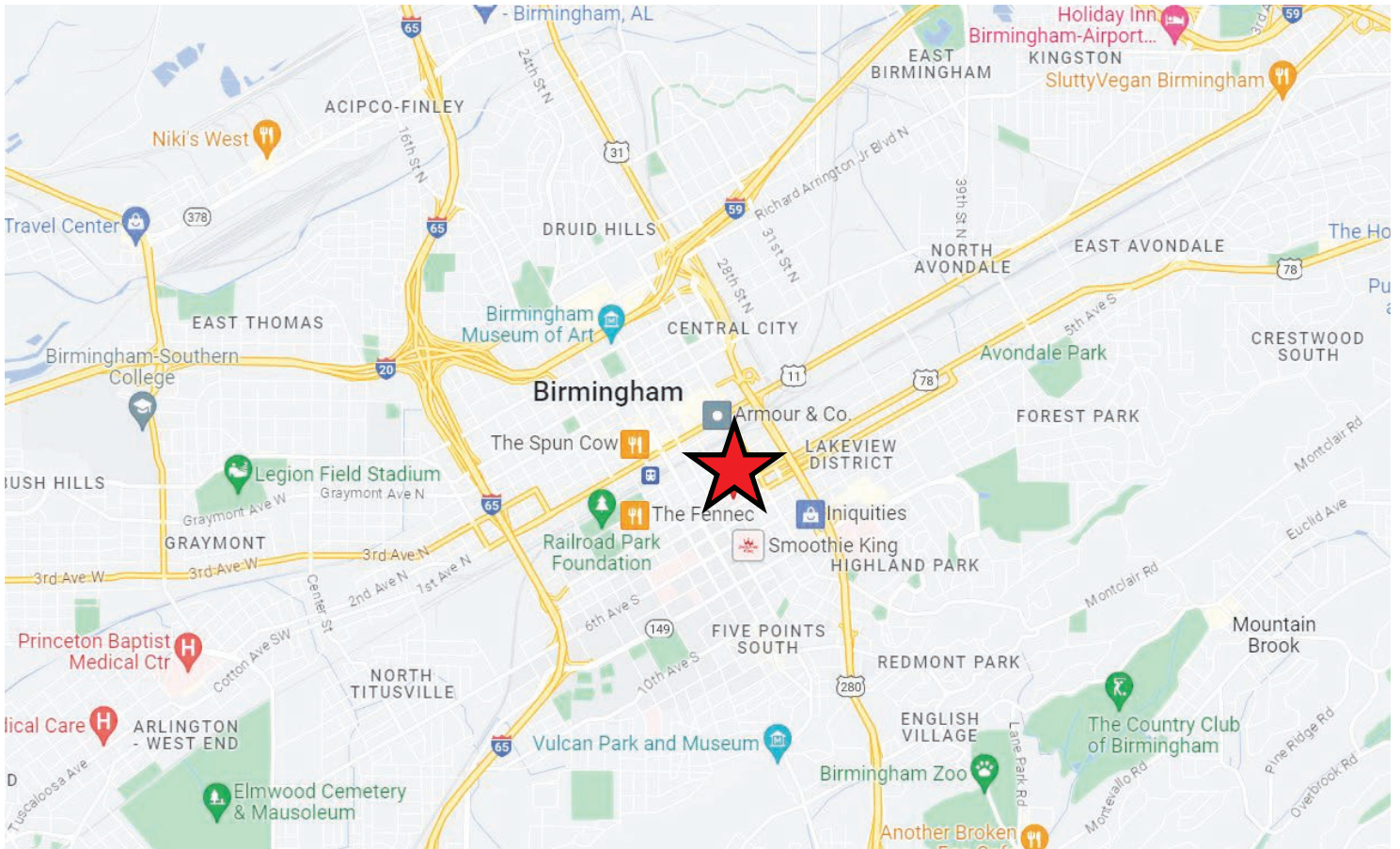
CONTACT

Champ Stewart

☎ o 205.879.3733 | c 205.910.9084

✉ cstewart@longleafrealestate.com

Medical/Retail Building for Lease | 2205 3rd Ave S, Birmingham, AL



Floor Plan

Upstairs Office

Railroad Park

Distance: 0.9 Miles (5 Min)

Regions Field

Distance: 1 Mile (5 Min)

UAB Hospital

Distance: 1.1 Miles (6 Min)

St. Vincent's Hospital

Distance: 1.7 Miles (8 Min)

Protective Stadium

Distance: 1 Mile (5 Min)

Birmingham Shuttlesworth International Airport

Distance: 5.1 Miles (9 Min)

The University of Alabama at Birmingham (UAB)

Distance Range: 0.3 Miles - 1.5 Mile

Birmingham School of Law

Distance: 0.6 Miles (4 Min)

Davita

Distance: 250 Feet (1 Min)

Cava

Distance: 0.2 Miles (2 Min)

Cook Out

Distance: 0.3 Miles (3 Min)

The Fish Market

Distance: 0.3 Miles (2 Min)

The Battery

Distance: 0.3 Mile (2 Min)

Newk's

Distance: 0.4 Mile (3 Min)

Rock N Roll Sushi

Distance: 0.3 Miles (3 Min)

The Pizitz Food Hall

Distance: 0.8 Miles (5 Min)