

Longleaf Realty

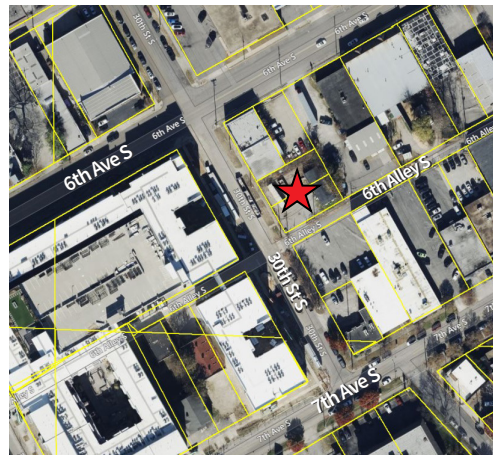
PARTNERS, LLC



VACANT LAND FOR SALE DOWNTOWN BIRMINGHAM



609 & 611 30th Street South, Birmingham, AL



Property: Vacant Land
Site: 9,015 SF | 0.2 Acres
Sale Price: \$550,000
County: Jefferson
Zoning: M-1
Location: Conveniently located in Lakeview, directly across the street from the new, “Met on 7th Apartments”



FOR MORE INFORMATION

CONTACT

Claude Tindle

☎ o 205.879.3733 | c 205.222.5263

✉ ctindle@longleafrealestate.com

CONTACT

Champ Stewart

☎ o 205.879.3733 | c 205.910.9084

✉ cstewart@longleafrealestate.com

Longleaf Realty Partners, LLC | Creating Value in Commercial Real Estate

PHYSICAL 1135 14th Ave S, Birmingham AL 35205 | MAILING PO Box 59245, Birmingham AL 35259 | P 205.879.3733 | longleafrealestate.com