

Longleaf Realty PARTNERS, LLC



OFFICE SPACE FOR LEASE

1900 Crestwood Blvd, Irondale AL, 35210
New South Center

Lease Rate: \$15/SF, Full Service

Property Type: Move- in Ready Office Suites

Location: Midtown Submarket

Available Square Foot:

-First Floor: 200 - 836 SF

-Second Floor: 200 - 1,167 SF

-Third Floor: 285 - 3,415 SF

Available Parking: 3 spaces per 1,000 SF

Features:

- Great Visibility from Crestwood Blvd
- Keycard Building Access
- Elevator Access
- Common Break Room Per Floor
- On-Site Conference Rooms and Kitchenette

Quick Access to I-20 and I-459



FOR MORE INFORMATION

Contact
Champ Stewart | o 205.879.3733 c 205.910.9084
cstewart@longleafrealestate.com

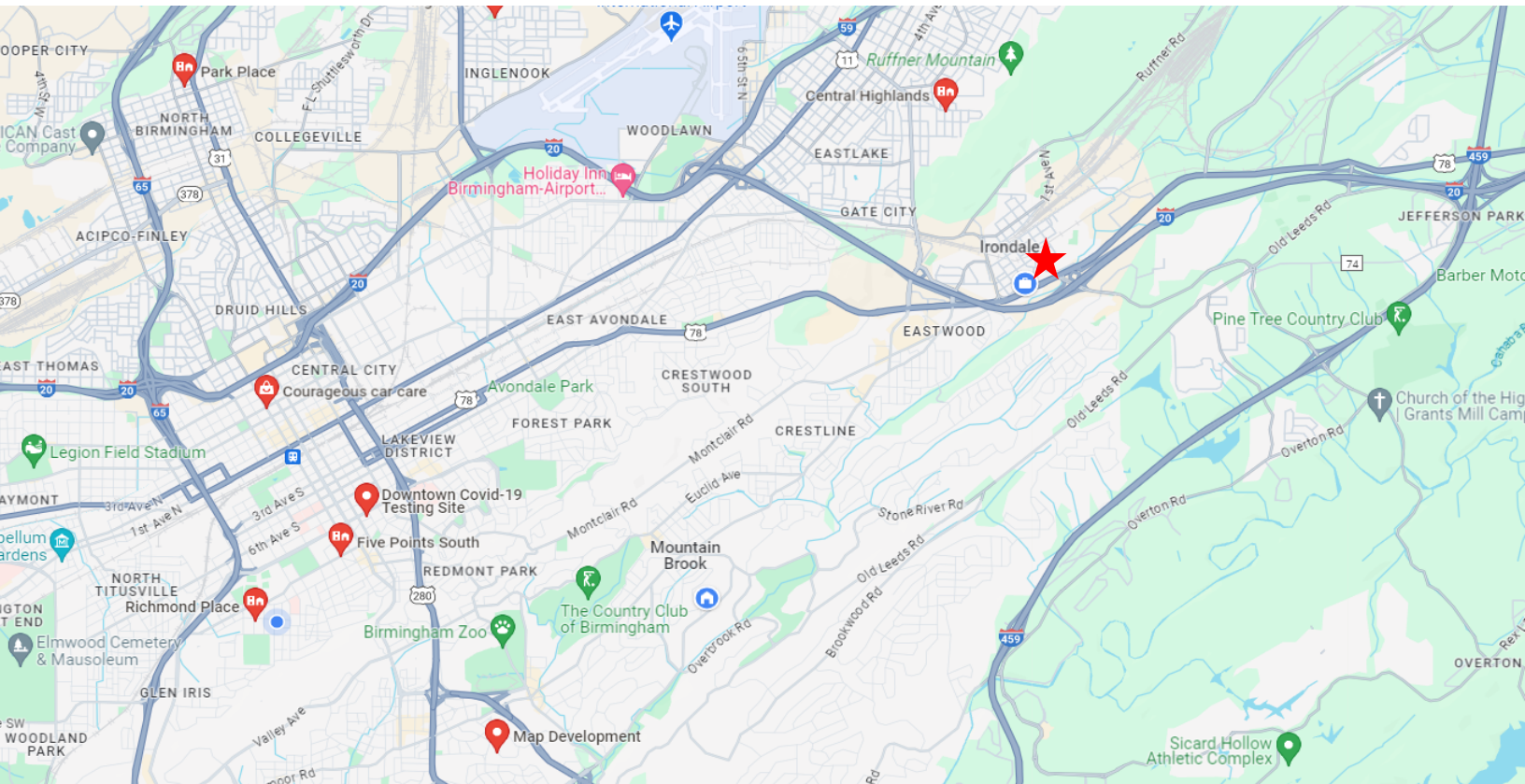
Contact
Greg Wallace | o 256.203.9690 c 251.222.5650
gwallace@longleafrealestate.com

Longleaf Realty Partners LLC Creating Value in Commercial Real Estate

Physical 1135 14th Ave Birmingham AL, 35205 Mailing PO Box 59245, Birmingham AL, 35259 P 205.897.3733 Website longleafrealestate.com

Information deemed reliable, but not guaranteed

Office Space for Lease 1900 Crestwood Blvd, Irondale AL, 35210



- * 5 Miles From the Heart of Downtown
- * 3.5 Miles to Birmingham- Shuttlesworth International Airport
- * 3 Miles from I-459
- * Close to Shopping and Dining in Irondale and Crestline
- * **Lunch Options:** Golden Rule BBQ, Irondale Café, Hamburger Heaven, Chick-Fil-A

Longleaf Realty Partners LLC Creating Value in Commercial Real Estate

Physical 1135 14th Ave Birmingham AL, 35205 Mailing PO Box 59245, Birmingham AL, 35259 P 205.897.3733 Website longleafrealestate.com

Information deemed reliable, but not guaranteed